

INSPECTION REPORT

End of contract

GENERAL INFO

File	294981
License plate	2ADE571
Vehicle identification number	W1N2476121W090383
Dossier	2020 234 069
Make	Mercedes GLB 200d Business Sol
Mileage	198384
First registration	25/02/2021
client availability date	17/02/2026
inspectionDate	17/02/2026

CHECK POINTS

Description	Number	Present	Remark
Original license plate		Y	
Registration Part 2		N	
Keys	2	Y	
Spare wheel		N	
Towbar (+keys)		Y	
Certificate of conformity		Y	
Registration certificate		Y	
Repair kit		Y	
RunOnFlat		N	
Charging cable		N	
Charge back wrong tyres		N	





DAMAGES

Damages	Type	Acceptable
61	Wing Front Left // Smart Repair Medium	N
67	Wing Front Left / Trim / Replace	N
91	Rocker Panel Left // Smart Repair Medium	Y
159	Rear Bonnet / Rear Window / Replace	N
533	Trunk Compartment / Side Cover Right / Replace	N
594	Trunk Lid Interior Coating / Complete Panel / Replace	Y
611	Front Left Door Interior Coating // Repair	Y
860	Interior Cleaning // Small	N

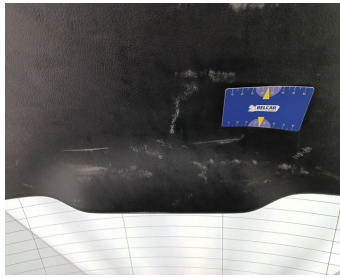
Damage Pictures



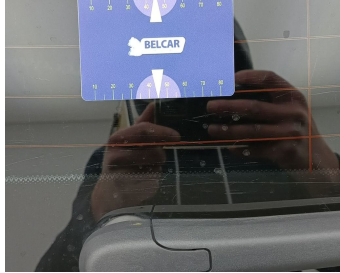
Damage within Renta-norm-



Trunk Compartment / Side Cover Right / Replace-scratch



Trunk Lid Interior Coating / Complete Panel / Replace-scratch



Rear Bonnet / Rear Window / Replace-scratch



Rocker Panel Left // Smart Repair Medium-scratch + dent



Interior Cleaning // Small-stain



Front Left Door Interior Coating // Repair-worn



Wing Front Left / Trim / Replace-scratch



Wing Front Left // Smart Repair Medium-scratch