

INSPECTION REPORT

End of contract

GENERAL INFO

File	308944
License plate	1YWF286
Vehicle identification number	W1N2539131V277897
Dossier	2020210046
Make	Mercedes GLC 200d Bus.Sol.
Mileage	89307
First registration	08/01/2021
client availability date	24/03/2026
inspectionDate	30/03/2026

CHECK POINTS

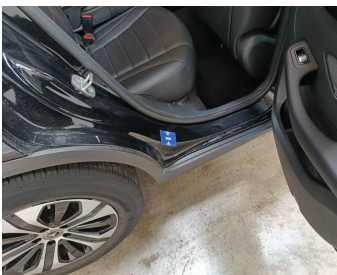
Description	Number	Present	Remark
Original license plate		Y	
Registration Part 2		N	
Keys	1	Y	
Spare wheel		N	
Towbar (+keys)		N	
Certificate of conformity		Y	
Registration certificate		Y	
Repair kit		Y	
RunOnFlat		N	
Charging cable		N	
Charge back wrong tyres		N	



DAMAGES

Damages	Type	Acceptable
13	Bumper Front // Painting	N
19	Bumper Front / Lower Cover Not Painted / Replace	N
273	Bumper Front / Grid Left / Replace	N
221	Side View Mirror Right // Plastic Repair	N
228	Side View Mirror Right / Direction Indicator / Replace	N
66	Wing Front Left // Polish	Y
106	Door Rear Left // Polish	Y
116	Wing Rear Left // Polish	Y
124	Light / Rear left / Replace	N
136	Bumper Rear // Polish	Y
150	Rear Bonnet // Smart Repair Small	N
186	Wing Rear Right // Polish	Y
205	Rocker Panel Right // Polish	Y
594	Trunk Lid Interior Coating / Complete Panel / Replace	Y
883	Key Price Range 2 //	N

Damage Pictures



Rocker Panel Right // Polish-scratch



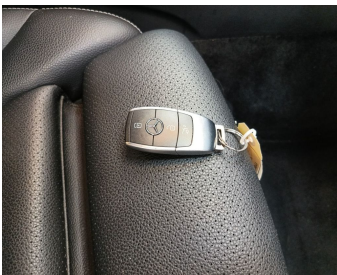
Wing Rear Right // Polish-scratch



Trunk Lid Interior Coating / Complete Panel / Replace-scratch



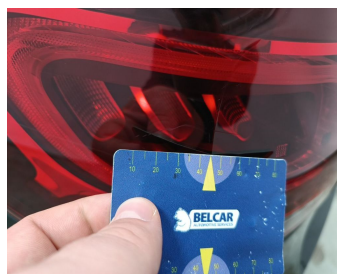
Rear Bonnet // Smart Repair Small-dent



Key Price Range 2 //-missing



Bumper Rear // Polish-scratch



Light / Rear left / Replace-scratch



Wing Rear Left // Polish-scratch



Door Rear Left // Polish-scratch



Wing Front Left // Polish-scratch



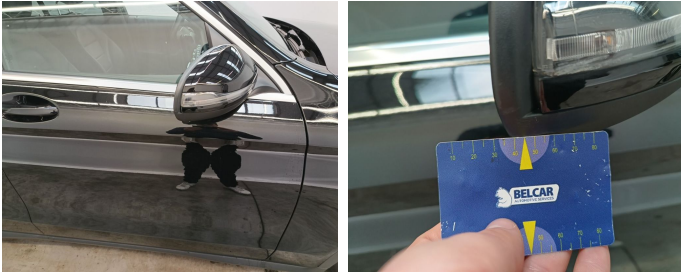
Bumper Front / Lower Cover Not Painted / Replace-scratch



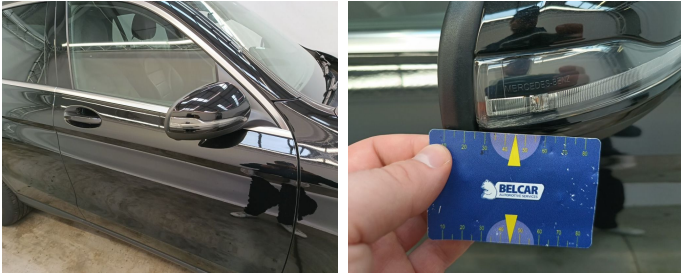
Bumper Front / Grid Left / Replace-scratch



Bumper Front // Painting-scratch



Side View Mirror Right // Plastic Repair-scratch



Side View Mirror Right / Direction Indicator / Replace-scratch