

INSPECTION REPORT

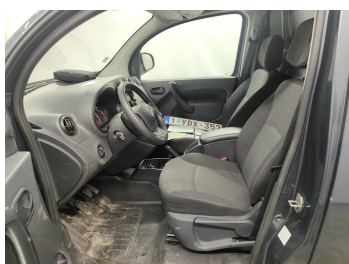
End of contract

GENERAL INFO

File	306860
License plate	1YBX352
Vehicle identification number	W1V4156031U281134
Dossier	2019331181
Make	Mercedes Citan 109CDI L2 Perf.
Mileage	105843
First registration	10/07/2020
client availability date	27/02/2026
inspectionDate	07/03/2026

CHECK POINTS

Description	Number	Present	Remark
Original license plate		Y	
Registration Part 2		N	
Keys	1	Y	
Spare wheel		Y	
Towbar (+keys)		N	
Certificate of conformity		Y	
Registration certificate		Y	
Repair kit		N	
RunOnFlat		N	
Charging cable		N	
Charge back wrong tyres		N	





DAMAGES

Damages	Type	Acceptable
19	Bumper Front / Lower Cover Not Painted / Replace	Y
77	Side View Mirror Left / Shell / Replace Not Painted	Y
114	Wing Rear Left // Repair & Painting	Y
138	Bumper Rear / Lower Cover Not Painted / Replace	Y
294	Rear Loading Door Left // Repair & Painting	N
311	Wheel Alloy Front Left // Repair	N
331	Wheel Alloy Rear Right // Repair	N
411	Seat Front Left // Repair	N
881	Key Price Range 1 //	N

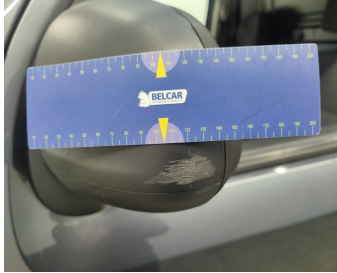
Damage Pictures



Damage within Renta-norm-scratch



Bumper Rear / Lower Cover Not Painted / Replace-scratch



Side View Mirror Left / Shell / Replace Not Painted-scratch



Wheel Alloy Front Left // Repair-scratch



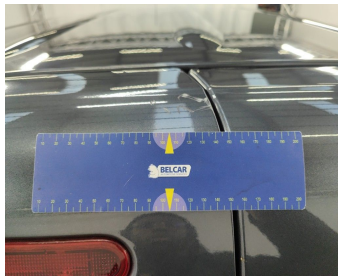
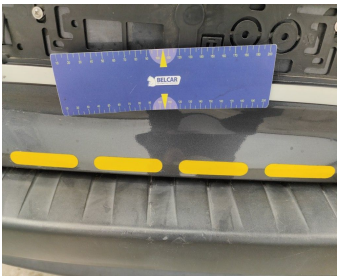
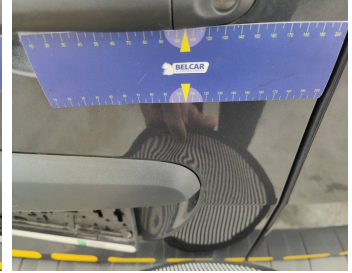
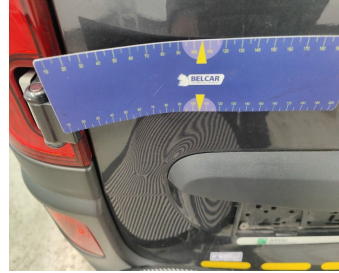
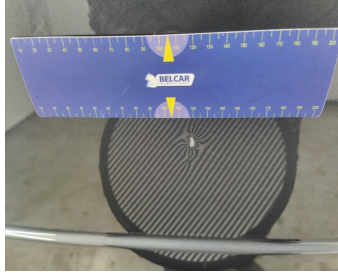
Bumper Front / Lower Cover Not Painted / Replace-scratch



Wheel Alloy Rear Right // Repair-scratch



Wing Rear Left // Repair & Painting-dent



Rear Loading Door Left // Repair & Painting-scratch + dent



Seat Front Left // Repair-Incinerated