

INSPECTION REPORT

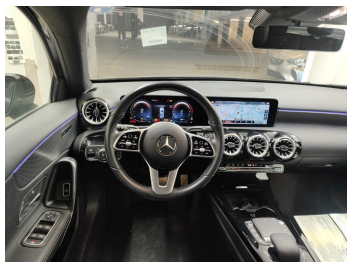
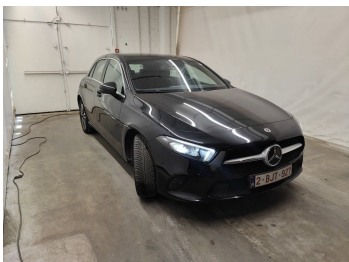
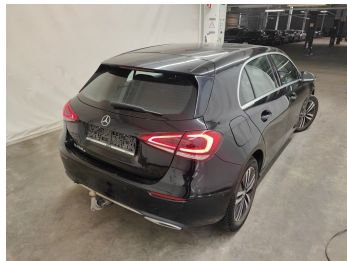
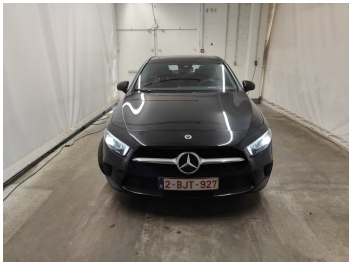
End of contract

GENERAL INFO

File	305393
License plate	2BJT927
Vehicle identification number	W1K1770861V114452
Dossier	2021012054
Make	Mercedes A 250e PHEV Bus.Sol.A
Mileage	63622
First registration	13/12/2021
client availability date	20/02/2026
inspectionDate	17/03/2026

CHECK POINTS

Description	Number	Present	Remark
Original license plate		Y	
Registration Part 2		N	
Keys	2	Y	
Spare wheel		N	
Towbar (+keys)		Y	
Certificate of conformity		Y	
Registration certificate		Y	
Repair kit		Y	
RunOnFlat		N	
Charging cable		Y	
Charge back wrong tyres		N	





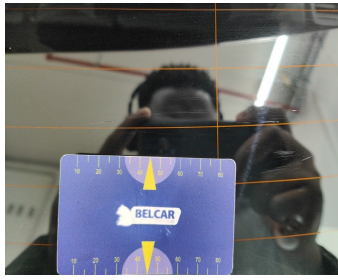
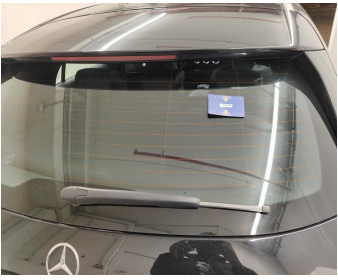
DAMAGES

Damages	Type	Acceptable
654	Lettering Removal 15min	N
84	Door Front Left // Repair & Painting	Y
91	Rocker Panel Left // Smart Repair Medium	Y
133	Bumper Rear // Painting	Y
159	Rear Bonnet / Rear Window / Replace	Y
201	Rocker Panel Right // Smart Repair Medium	Y
340	Wheel Two Tone Front Right // Repair	N
411	Seat Front Left // Repair	Y
538	Trunk Compartment / Boot Cover / Replace	N

Damage Pictures



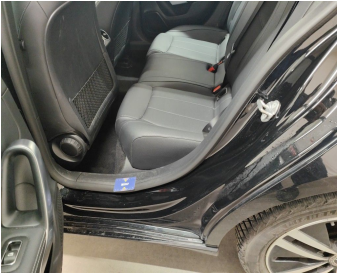
Damage within Renta-norm-



Rear Bonnet / Rear Window / Replace-scratch



Seat Front Left // Repair-scratch



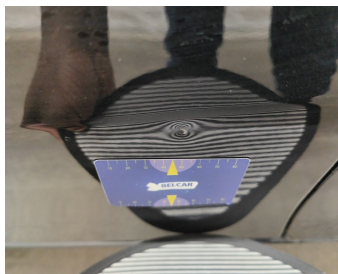
Rocker Panel Left // Smart Repair Medium-scratch



Wheel Two Tone Front Right // Repair-scratch



Rocker Panel Right // Smart Repair Medium-dent



Door Front Left // Repair & Painting-scratch + dent



Bumper Rear // Painting-bad repair



Trunk Compartment / Boot Cover / Replace-cracked



Lettering Removal 15min-Remainder stickers

